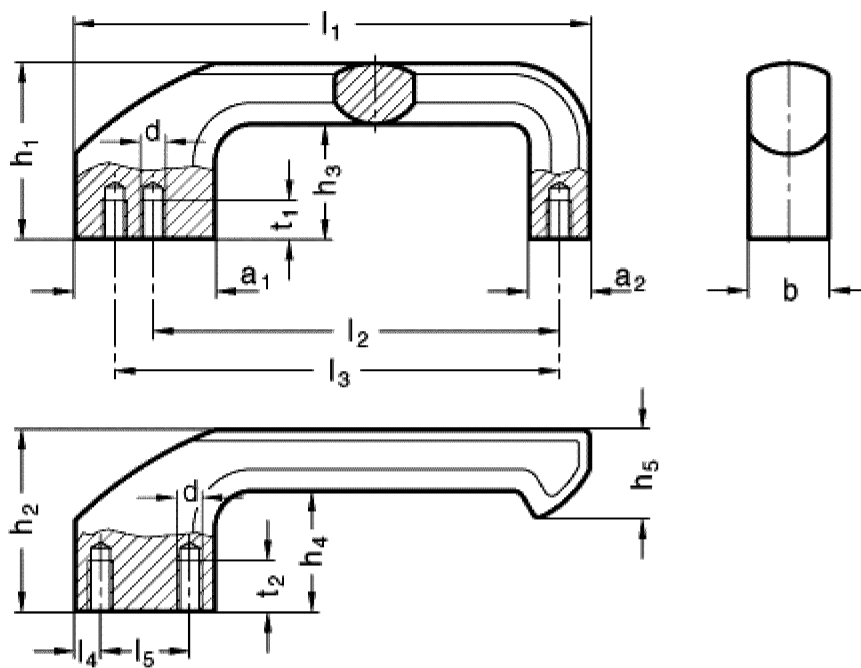


GN 559 Cabinet "U" handles



Type **A** closed type

l1	a1	a2	b	d	h1	h2	h3	h4	h5	l2	l3
162	38	19	25	M 8	55	57	36	38	28	128	140

Type **B** open ended type

l4	l5	t1 min.	t2 min.
8	22	12	16

Specification

Aluminium

Plastic coated

black **SW** RAL 9005
textured finish

Information

A special characteristic of the Handle GN 559 is the thumb rest pad on the front of the leg.

At the same time the extended leg offers an open ended version with wide access.

Handles GN 559 are known for their high stability. They are fixed by two M8 screws whereby type A offers two alternative hole centers (l2 or l3).

How to order

Cabinet "U" handle

GN 559-162-B-SW

Code no. **559**
l1 **162**
Type **B**
Finish **SW**